

8000 + 9000 SERIES

Function
Ergonomics
Design

NEW

Printing, Scanning and Copying Systems to Meet all Requirements.



Innovation and State-of-the-Art Technology!

HIGH-SPEED

ROWE: Always one step ahead!

Dear customers,

Staying ahead means getting your priorities right.

The ROWE 8000 + 9000 series, new developments, have been equipped with **20 state-of-the-art innovations**, these range from the ROWE PAPER INPUT ASSISTANT to ROWE PRO LOGIC+ image processing technology.

As you would expect from ROWE, both series are completely modular. You need a high-speed printing system with integrated colour scanning system, but only have limited space available – no problem with the ROWE RCS 8000 + 9000. This modular design means your requirements for document reproduction can be optimally met. We make no compromises regarding the quality of our products. All ROWE product developments are solely manufactured in one of the most modern factories in the world – **“Made in Germany”**.

We would like to invite you to find out why ROWE fascinates. Just make an appointment. Our authorised distributor will be pleased to arrange a live demo for you.

We look forward to seeing you!

Gerd Ermert

Director, Technical and Development Department

ROWE RCS 8000
9000



PAGE 4

**Compact High-Speed System
Colour Scanner
Copier
Printer**

Product overview

RCS

RC

RS

ROWE RC 8000
9000

ROWE RS 8000
9000

PRO LOGIC+
INSIDE



PAGE 6

High-Speed Colour Scanner

36"
43"
50"

PAGE 10

High-Speed Network Printer

600dpi
with up to
6 rolls!

**ROWE
RCS**

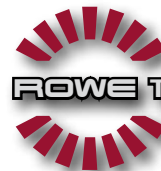
**8000
9000**

Compact **HIGH-SPEED** printing, copying and colour scanning systems



ROWE COLOUR SCAN MODULE

(option)



ROWE TITLE BLOCK DETECTION AND ROTATION:

(option)

The title block positions of print jobs are detected and, if necessary, the files are rotated for online folding according to DIN requirements – fully automatic in the integrated document workflow.



ROWE ERGOTEC: *(please see page 11)*

Compare the ROWE ERGOTEC with its "Paper Input Assistant", stable run, smooth sliding and operation with barely a whisper to conventional drawer systems! You will be impressed by the difference!



EMBEDDED ROWE POWER CONTROLLER

with integrated plot management.



Further ROWE RCS - Highlights

- ✓ The most compact dimensions in its class
- ✓ Impressive low energy consumption in energy-saving mode [28 watt] and during operation [1600 watt]
- ✓ Lowest ozone emission, considerably lower than the legal limits
- ✓ Scanning up to 12 m/min, printing and copying up to 10 m/min (ROWE RCS 9000)
- ✓ Large operating panel, including job templates
- ✓ Wide range of software:
 - ROWE PRINT MASTER
 - ROWE PRINT MASTER LT
 - ROWE PRINT SPECIALS (option)
 - ROWE COST CONTROL (option)
 - ROWE TITLE BLOCK DETECTION AND ROTATION (option)
- ✓ Folding system ROWEFOLD 721-4
 - ROWE easy HIGH-SPEED manual feed
 - ROWE SORTER (option)
 - ROWE AUTOMATIC TAB APPLICATOR (option)
 - ROWE PUNCHER [2-hole or 4-hole] (option)
 - ROWE EXCESS LENGTH CONTROL (option)
- ✓ Further highlights to follow on the next pages.

ROWE ECO TONER MANAGEMENT

Original ROWE Eco Toner is non-toxic – this is certified by the LGA, an independent institution for product testing. Exemplary low ozone emission: ROWE Digital Systems remain considerably below the legal limit. Your health is also our concern.



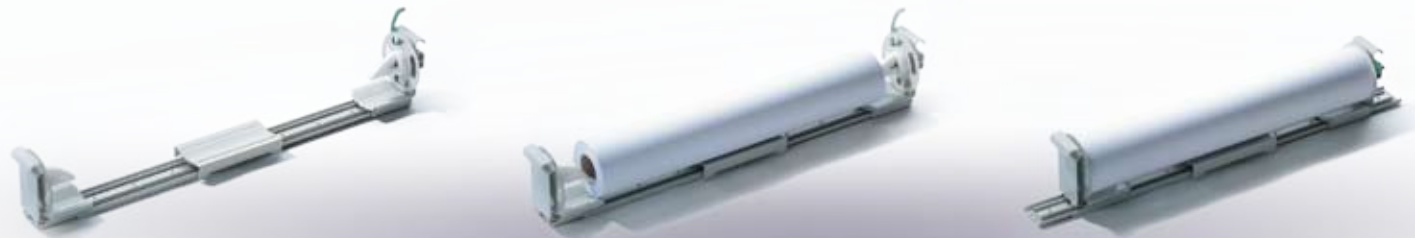
ROWE printing and copying systems of the 8000 + 9000 series were Energy Star certified – our contribution to low energy costs with protection of the environment by saving resources.

ROWE PAPER INPUT ASSISTANT

Exchanging paper roll without a roll core – simple, quick and absolutely ergonomic.

And this is how it works:

Insert new roll, slide the ROWE PAPER INPUT ASSISTANT together and shift the lever – that's it, finished. The ROWE PAPER INPUT ASSISTANT ensures absolute alignment of the roll – simply ROWE.



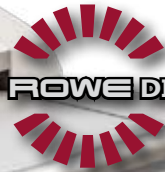
**ROWE
RC**

**8000
9000**

Colour scanning systems with up to 50" and 4800 dpi



Scan width up to 50" // thickness of originals up to 30 mm
(option)



ROWE DIS (Document Improvement System):

Scan only once for an optimal result.



ROWE INDEX: *(option)*

- Indexing and clearly archiving large amounts of drawings
- Wizard-supported work flow
- Automatic cleanup of drawings
- Intelligent detection of the title block content (OCR)
- Quick data control for precise transmission
- Data export via ODBC



ROWE VIEWSTATION:
(option)

Supports the operator with its ergonomic operating console, raised screen holder and floor unit – all part of the original ROWE design.

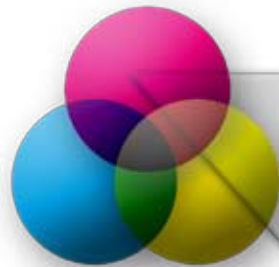


Further ROWE RC - Highlights

- ✓ No warm-up time, immediate operation
- ✓ EMBEDDED ROWE POWER CONTROLLER with 1 Gbit network card for easy connection to your network
- ✓ ROWE COLOUR SCAN MODULE (option)
- ✓ HIGH-SPEED scanning at up to 15 m/min (ROWE RC 9000)
- ✓ Scan-to-file kit
- ✓ Large-area aluminium feed table with non-stick surface.
- ✓ Feed with original face-up
- ✓ Adjustable guide ledge, scale +/- 40 mm

ROWE RC - scan here, print anywhere in the world

ROWE network scanners and printers are intelligent:
Scan here and print, archive and edit anywhere in the world.



Colour inkjet printer



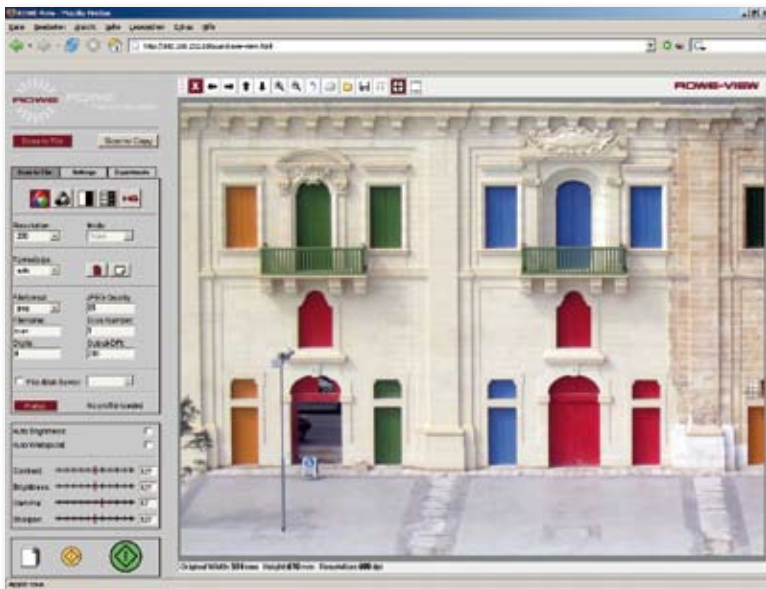
ROWE RS PRINTER



ROWE RC SCANNER

ROWE VIEW

allows for direct viewing and editing of your scanned originals – instantaneous, no reduction of file size.



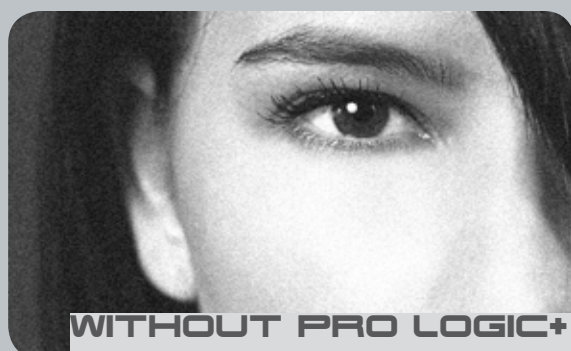
ROWE MULTIPRINT

Directly printing a scan on several ROWE printers at the same time - no problem with ROWE MULTIPRINT.

**ROWE
RC**

**8000
9000**

**Optimal scan quality
with ROWE PRO LOGIC+**



What does ROWE PRO LOGIC+ do for you?

The newly developed image processing technology from ROWE scans your originals in brilliant colours, true to the original, and with convincing image sharpness. By means of a special technology from the field of offset printing, black/white scans achieve a fantastic sharpness and are uniquely and fascinatingly homogenous.



ROWE HEIGHT ADJUSTMENT

Scans even the thickest originals – up to **30 mm**.
ROWE engineers succeeded in scanning originals with a thickness of more than 15 mm – often requested by operators in the past.
The "ROWE Height Adjustment Unit" works fully automatically by simply pressing a button – simply ROWE.

ROWE BACKLIGHT

provides a considerably more efficient removal of unwanted background in the case of extremely dark transparencies and film originals, compared to conventional scanners.



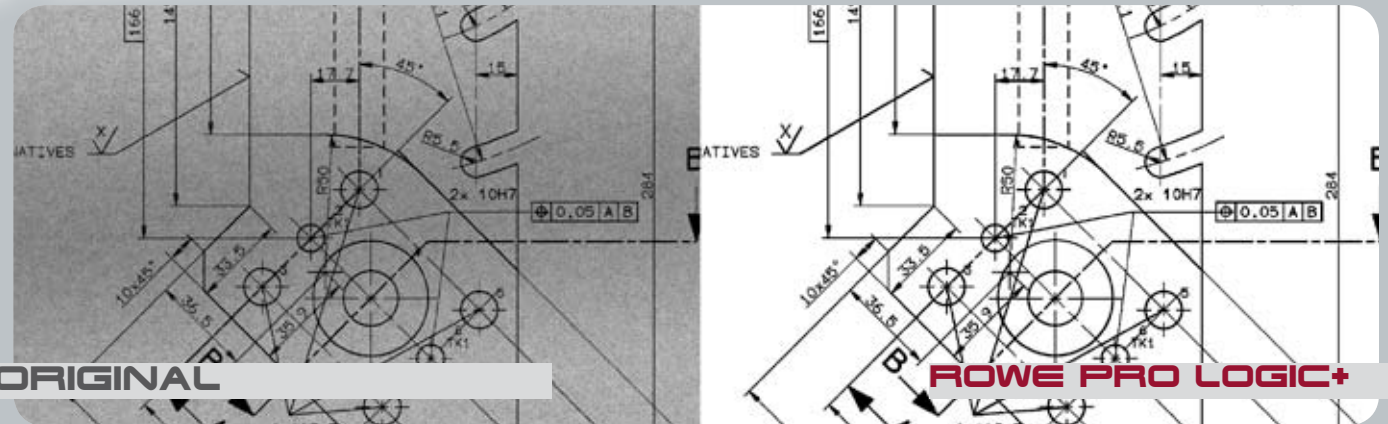
PRO LOGIC+
INSIDE

ROWE PRO LOGIC+

Whatever your scan originals look like, with **ROWE PRO LOGIC+** it is possible to quickly reproduce image information in top quality without any difficulty, even with poor originals.

Reliably, without delay and without any time-consuming image editing, the important information from your plans, drawings and images is clearly filtered.

Simply scan and **achieve the optimum!**



**ROWE
RS**

**8000
9000**

HIGH-SPEED network printing systems



ROWE ECO TONER

4 or 6 automatic rolls



New toner management: Top print quality with lines, grey and full areas.

ROWE PAPER INPUT ASSISTANT



Further ROWE RS - Highlights

- ✓ **Space-saving front output**
(option)
- ✓ **Print speed up to 10 m/min**
(ROWE RS 9000)
- ✓ **4 to 6 automatic rolls with PAPER INPUT ASSISTANT for each roll**
- ✓ **Remaining roll length indicator**
- ✓ **Automatic roll width detection after exchange**
(option)



ROWE ERGOTEC is a completely new drawer system made by ROWE. The ROWE product development engineers didn't have any lesser goal than to define a new standard in ease of operation and reliability.



ROWE SILENCE SYSTEM

ROWE Systems are exemplary silent – also during operation. ROWE acoustic engineers were acutely aware that ROWE printing and scanning systems needed to be suitable for operation directly in the workplace. That is why the fan and fusing system etc. completely turn off in energy-saving mode.

ROWEFOLD 721-4

Fully automatic printing, folding and sorting on smallest space: The ROWE models of the 8000 and 9000 series can be upgraded with the ROWE online folding system ROWEFOLD 721-4 at any time – on request also with automatic tab applicator, sorter or puncher. As ROWE is a full-line manufacturer, all components, including software, are optimally aligned to each other.



Technical Data

ROWE HIGH-SPEED Network Printing Systems

		ROWE RS 8000	ROWE RS 9000	ROWE RCS 8000	ROWE RCS 9000
Technology	Electro photographic (LED) with OPC drum	■	■	■	■
Resolution	600 dpi	■	■	■	■
Print Speed	Running metres per minute	8	10	8	10
ROWE ERGOTEC	New smooth-running drawer system, designed after ergonomic aspects, with parallel adjustment and buffered stoppers	■	■	■	■
Automatic detection of roll width	Automatically recognises the width of a new roll after it was input	□	□	□	□
ROWE INDICATOR OF REMAINING ROLL LENGTH	Automatically informs about the available remaining length of each roll	■	■	■	■
ROWE PAPER INPUT ASSISTANT	Innovative media feed system without roll core - easiest handling (handicapped accessible)	■	■	■	■
Number of automatic rolls	4 automatic rolls and single sheet feed	■	■	■	■
Modular construction principle	5th + 6th roll	□	□	-	-
ROWE ECO PRESS	New fusing technology: Optimal fusing quality combined with minimum energy consumption (Energy Star certified)	■	■	■	■
ROWE ENERGY SYSTEM	Meets the criteria of the Energy Star	■	■	■	■
ROWE DATA SAFE	Integrated data saving system	■	■	■	■
ROWE SILENCE SYSTEM	Exemplary silent, suitable for operation directly in the workplace	■	■	■	■
ROWE ECO-TONER SYSTEM	Examined regarding harmful substances and certified by LGA (non-toxic)	■	■	■	■
	New toner management: Top print quality with lines, grey and black areas	■	■	■	■
	Clean and closed toner system, recyclable cartridges	■	■	■	■
Output formats	DIN A4-DIN A0 and 914 mm width, up to 16 m length (excess lengths on demand), very quick activation of the roll suiting the output format	■	■	■	■
Material types	Plain, transparent, recycling, fluorescent and coloured paper, films and vellum; up to 110g per m ² ; details see ROWE material catalogue	■	■	■	■
Back output	Integrated receiving tray for up to 100 prints A4-A0	■	■	■	■
Front output (receiving tray for back output is not applicable)	Comfortable stacking facility for up to 100 prints A4-A0 (not available for systems with 5th + 6th roll)	□	□	-	-
ROWE STACKER	Stacker for high printing volumes of A4-A0 - dimensions: W/D/H in mm 1166/1310/678	□	□	□	□
Power consumption in watt	Energy-saving mode	23	23	28	28
	Operation	1550	1550	1600	1600
Noise development in db (according to EN 7779 operator position)	Energy-saving mode	not measurable	not measurable	not measurable	not measurable
	Operation	52	52	52	52
Power connection	230 V, 50/60 Hz	■	■	■	■
Ozone concentration	The following values are considerably lower than the legal limits: <0,001 ppm average value <0,002 ppm peak value	■	■	■	■

LEGEND: ■ standard equipment, □ additional equipment, - not available

EMBEDDED ROWE POWER CONTROLLER

		ROWE RS 8000	ROWE RS 9000	ROWE ACS 8000	ROWE ACS 9000
Platform	ROWE Controller with integrated operating system and file spooling	■	■	■	■
File formats	HPGL, HPGL2, HPRTL, TIFF, G2/G3/G4, Packed Bits, CALS 1 and 2, Calcomp 906/907	■	■	■	■
	PostScript Level 2 and 3, PDF, PDF-A	□	□	□	□
Interfaces	Standard: Ethernet 10/100/1000 MBit/s with RJ45. Optional: other network cards	■	■	■	■
Network protocols	TCP/IP, NETBEUI (SMB), Novell (IPX/SPX), FTP, LPD; other protocols are supported via an external print server	■	■	■	■
Functions	Automatic detection of data format	■	■	■	■
	Automatic roll selection and change-over	■	■	■	■
	Print manipulation: rotating, positioning and automatic scaling	■	■	■	■
	File spooling on the controller	■	■	■	■
	Set memory: send once, process once, print multiply	■	■	■	■
	Concurrent receiving, processing and printing of digital jobs	■	■	■	■

ROWE PRINT MANAGER

ROWE PRINT MASTER	Multiuser job submission software with direct feedback from the device, web-based	■	■	■	■
	Printer configuration	■	■	■	■
	Preview function	■	■	■	■
	Saving and recalling of jobs	■	■	■	■
	Repeated printing of jobs	■	■	■	■
ROWE PRINT MASTER LT	Easy and quick: the job submission software with reduced scope	■	■	■	■
ROWE PRINT SPECIALS	Software application for editing stamps, margin texts, cover sheets, folding programmes and pens	□	□	□	□
ROWE COST CONTROL	Comprehensive cost centre management	□	□	□	□
ROWE TITLE BLOCK DETECTION AND ROTATION	The title block positions of print jobs are detected and, if necessary, the files are rotated for online folding according to DIN requirements – fully automatic in the integrated document workflow	□	□	□	□

	ROWE RS back output (4 rolls)	ROWE RS front output (4 rolls)	ROWE RS back output (6 rolls)
Dimensions width/depth/height in mm	1375/700*/960	1375/750/1175	1375/700*/1375
Weight in kg	337 kg	342 kg	422 kg

LEGEND: ■ standard equipment, □ additional equipment, - not available

*without stacker, receiving tray

Dimensions / Weights
ROWE RCS - page 15



Cul (CAN/CSA-C22.2 No 60950),
 CB (EN 60950), EMC directive 89/336/EEC

Technical Data

ROWE HIGH-SPEED Network Scanning Systems 36" - 50"

		ROWE RC 8000	ROWE RC 9000	ROWE RCS 8000	ROWE RCS 9000
Model	Freestanding console Space-saving embedded scanner	■	■	-	-
Technology	ROWE High-Tech CIS with DOUBLE LIGHT TECHNOLOGY , real-time image processing hardware, 36 bits colour.	■	■	■	■
Resolution	600 dpi / also lower resolutions selectable as of 50 dpi in 1 dpi steps	■	■	■	■
	3600 dpi / also lower resolutions selectable as of 50 dpi in 1 dpi steps	□	□	□	□
	4800 dpi / also lower resolutions selectable as of 50 dpi in 1 dpi steps	-	□	-	□
Scan width 36" / 914 mm	Original width: 200 - 965 mm	■	■	■	■
Scan width 43" / 1092 mm	Original width: 200 - 1284 mm	□	□	-	-
Scan width 50" / 1270 mm	Original width: 200 - 1284 mm	□	□	-	-
Scan length	Unlimited (only limited through hard disk capacity), minimum original size: 200 mm	■	■	■	■
Thickness of original	Up to 2 mm	■	■	■	■
ROWE HEIGHT ADJUSTMENT	Up to 30 mm thickness of original	□	□	-	-
Copy and scan mode	Lines and text, grey scales, dark original, blue print, transparent and photo (standard)	■	■	■	■
Operating panel incl. job templates	Adjustable specific to operator, intuitive, multilingual, each with 32 freely definable job templates for copying or scanning, selectable by one click	■	■	■	■
Feed table	Made of aluminium with non-stick surface	■	■	■	■
Feed guide ledge	Adjustable +/- 40 mm	■	■	■	■
Original feed	With original face-up , automatic feed on/off	■	■	■	■
Scan speed	Black/white and greyscales in m/min (max)	13,5	15	12	12
	Colour in m/min (max)	4,5	5	4	4
	Constant speed	■	■	■	■
Warm-up period	None, immediate operation (also for colour)	■	■	■	■
Output unit	Automatic return of scan original	■	■	■	■
Format detection	Precise, digital automatic format detection; indicator for the exactly determined width on the scanner operating panel	■	■	■	■
Copy performance	Extremely operating-friendly through automatic format detection and roll selection (ROWE Print Systems)	■	■	■	■
ROWE MULTIPRINT	Directly printing a scan on several ROWE printers at the same time	■	■	■	■
ROWE MULTITASKING	Continuous processing of copy and scan jobs, also during printing of copies and print jobs, pre-programming of the subsequent job	■	■	■	■
ROWE RECOPY	Repeated output of the last scanned original with different parameters (reduction, enlargement, folding, etc.), without rescanning	■	■	■	■
Copy zoom	Automatic zoom to a standard format; user-defined from 25% - 1000% in steps of 0,1%	■	■	■	■
Exposure control	Automatic, manual fine adjustment possible; background compensation on/off.	■	■	■	■
ROWE DIS (Document Improvement System)	Scan only once to achieve the optimal result	■	■	■	■
Image processing technology	New: ROWE PRO LOGIC+ for highest requirements on scan and copy quality	■	■	■	■
ROWE BACKLIGHT	Ideal for scanning extremely dark transparent originals	□	□	□	□
Scan accuracy	0,1% +/- 1 pixel	■	■	■	■
1:1 tolerance	Below 0,3% (A0 original)	■	■	■	■
Image processing	Relocating, aligning, mirroring, inverting, reducing or selecting areas	■	■	■	■
Stamping of copy for ROWE printer	Includes: free text, date, time	■	■	■	■
	Up to 48 freely selectable stamps	■	■	■	■
	Selection of stamp list directly at the display	■	■	■	■

LEGEND: ■ standard equipment, □ additional equipment, - not available

		ROWE RC 8000	ROWE RC 9000	ROWE RCS 8000	ROWE RCS 9000
Multi copy mode	1-999 copies	■	■	■	■
Input mode	Single sheet or sets	■	■	■	■
Set memory	Up to 999 copies of one set, approx. 1000 A0 originals black/white	■	■	■	■
Roll selection	Manual or automatic selection according to defined user settings	■	■	■	■
Criteria for margins / cut	Setting of front or trail edge, standard cut, synchro cut and customised cut	■	■	■	■
Network connection	115-230 V, 50/60 Hz	■	■	■	■
Power consumption in watt	Energy-saving mode	10	10	28	28
	Operating mode	200	200	1600	1600
Noise development in db (according to EN 7779 operator position)	Energy-saving mode	not measurable	not measurable	not measurable	not measurable
	Operating mode	50	50	52	52
ROWE VIEWSTATION	Ergonomic operating console with floor unit and screen holder	□	□	□	□
ROWE ENERGY SYSTEM	Energy Star certified	■	■	■	■

EMBEDDED **ROWE** POWER CONTROLLER

		ROWE RS 8000	ROWE RS 9000	ROWE RCS 8000	ROWE RCS 9000
Platform	ROWE Controller with integrated operating system and 1 Gbit network card	■	■	■	■
Interfaces	Standard: Ethernet 10/100/1000 MBit/s with RJ45. Optional: other network cards	■	■	■	■

ROWE SCAN MANAGER

Scan-to-File Kit	Software application for digitalisation of documentation	■	■	■	■
ROWE COLOUR SCAN MODULE	Scan-to-File Kit Colour, ROWE VIEW COLOUR , 1 printer driver for ink jet printer	□	□	□	□
Further printer drivers	Current list available on request	□	□	□	□
ROWE VIEW (black/white and greyscales)	Instant possibility to check the scan, no reduction of file size	■	■	■	■
ROWE EDIT (black/white and greyscales)	Professional editing of scans	□	□	□	□
ROWE EDIT COLOUR	Professional editing of scans (black/white, greyscales and colour)	□	□	□	□
ROWE INDEX	Professionally indexing and archiving large amounts of drawings	□	□	□	□
Scan destinations	16 programmable directly available destinations	■	■	■	■
	Scan-to-web via FTP	■	■	■	■
	Scan-to-network directory	■	■	■	■
	Scan-to-PC, scan-to-SMB, scan-to-E-Mail	■	■	■	■
Data formats	TIFF (uncompressed, Packbits, G3, G4 and LZW), TIFF-JPG, PDF-JPG, PDF (uncompressed, LZW and G4), PDF-A, CALS	■	■	■	■
Scan modes	Single scan, batch scan with/without test print	■	■	■	■
File names	Creates individual file names automatically for every scan, changes file names when scanning, individual naming of files	■	■	■	■
Operator friendliness	Scan-to-file directly via 32 freely definable job templates to one of the 16 scan destinations by pressing only one button	■	■	■	■

Dimensions / Weights

	ROWE RC 36"	ROWE RC 43" - 50"	ROWE RCS 36"
Dimensions width/depth/height in mm	1375/895/1160	1705/895/1160	1375/700*/1170
Weight in kg	127 kg	157 kg	373 kg

LEGEND: ■ standard equipment, □ additional equipment, - not available

*without stacker, receiving tray



Cul (CAN/CSA-C22.2 No 60950), CB (EN 60950), EMC directive 89/336/EEC

All products from one source:

We, the company ROTH + WEBER GmbH, are an independent and internationally operating enterprise from Germany represented in more than 80 countries worldwide. Under the brand name ROWE, we are a leading worldwide supplier of large-format printing systems, colour scanners, folding machines and comprehensive software solutions for the professional document workflow.



Function | Ergonomics | Design



ROTH + WEBER GmbH
D-57520 Niederdreisbach
Phone: +49 27 43 / 92 17 - 0
Fax: +49 27 43 / 20 18
www.rowe.de
info@rowe.de

MADE IN GERMANY



**Cul (CAN/CSA-C22.2 No 60950),
CB (EN 60950), EMC directive 89/336/EEC**